



100%
MADE IN ITALY



LINDHAUS®

QUALITY CLEANING EQUIPMENT

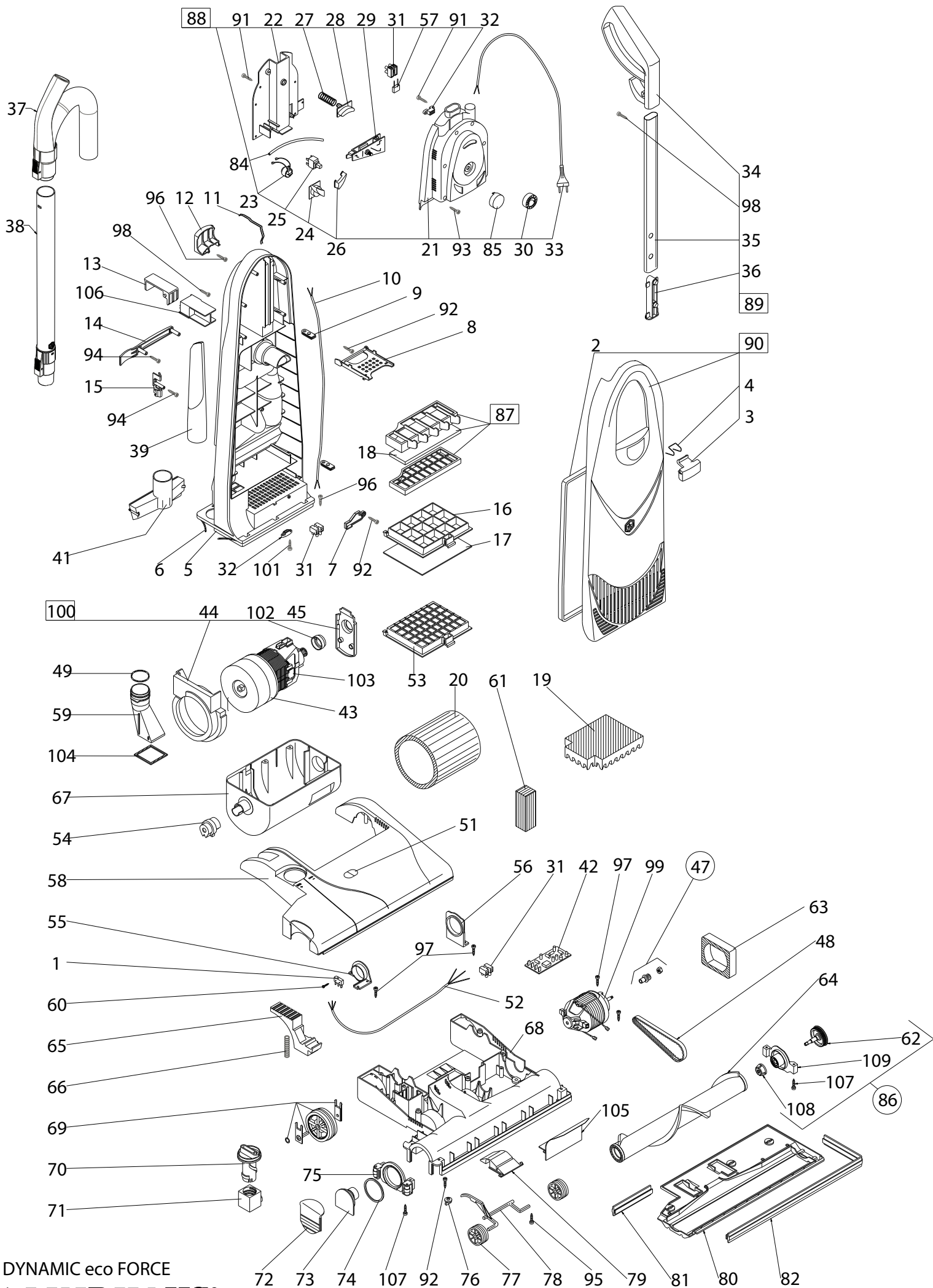
PROFESSIONAL LINE

ECO FORCE



Dynamic eco FORCE
300e/380e/450e
SPARE PARTS DIAGRAM
SPARE PARTS LIST





Via Belgio, 22 - 35127 Padova - ITALY
 Tel. +39 049 8700307 Fax +39 049 8700605
 E-mail: vacuum@lindhaus.it - lindhausrl@pec.it - www.lindhaus.it
 Reg.Imp.PD-Cod.Fiscale-P.Iva IT02151740285
 REA 211372 - Capitale Sociale €350.000,00 i.v.
 Reg.AEE: IT08010000000218 Reg.Pile/Accum.: IT16100P00004235

LSRC00316

EFFECTIVE FROM

01/01/2019

DYNAMIC eco FORCE

Pos	Code	Description
1	020640000	MICROSWITCH
2	011760315	BAG DOOR GASKET
3	004493801	BAG DOOR LATCH BLUE
4	012370009	BAG DOOR SPRING
5	004451201	BAG HOUSING DARK GREY
6	085620000	BAG HOUSING GASKET
7	004581304	EXHAUST GRILL HOOK
8	004571304	BAG SAFETY SUPPORT
9	085450081	STRAIN RELIEF KIT 2 PCS.
10	022330028	INTERNAL CORD 2 WIRES WITH VACUUM SENSOR
10	022320028	INTERNAL CORD 3 WIRES WITH VACUUM SENSOR
11	012350009	ANTISTATIC SPRING
12	004540104	HOSE SUPPORT
13	001880105	CORD HOOK MEDIUM GREY
14	004560104	TRANSPORT HANDLE
15	004550104	ACCESSORY CLIP
16	003360100	EXHAUST GRILL
17	085470081	EXHAUST MICROFILTER 10 PCS
18	012330316	MOTOR PROTECTION FILTER
19	012540016	FOAM FILTER
20	010910016	MOTOR FILTER
21	004511201	ELECTRIC PANEL HOUSING
22	004501201	ELECTRIC PANEL COVER
23	022150000	VACUUM SENSOR WITH LIGHT
24	004610835	RED LENS
25	022140000	MAIN SWITCH
26	004601701	SWITCH BUTTON
27	012360009	HANDLE SPRING
28	004520101	HANDLE BUTTON
29	020800000	CIRCUIT BOARD V.100/120
29	020820000	CIRCUIT BOARD V.230/240
30	004530101	POWER ADJUSTING KNOB
31	020040400	TERMINAL BLOCK 2 POLES
31	020340400	TERMINAL BLOCK 3 POLES
32	000070305	CORD CLAMP
33	020200312	CORD.2x1 SCHUKO PLUG
33	020780312	CORD.2x1 UK PLUG
33	021300312	CORD 2x1 AUSTRALIAN PLUG
33	020990312	CORD 2x1 SWISS PLUG
33	023340320	CORD 2x1,25 10,7 MT.(JAPAN)
33	022480020	CORD 3x18 12,5 MT. USA PLUG YELLOW
34	085463881	HANDLE GRIP BLUE

35	085520081	CROMATE TUBE + HANDLE BUTTON
36	084520081	HANDLE BUTTON ASSEMBLY 2 POS.
37	181450381	EXTENSION HOSE WITH HANDLE GRIP FOR DYNAMIC
38	032340300	TELESCOPIC WAND for DYNAMIC
39	030060310	CREVICE TOOL
41	030820300	UPHOLSTERY TOOL
42	022800000	CIRCUIT BOARD V.100-120/55-60 W.170
42	025450000	CIRCUIT BOARD 230/240V
43	051420080	VACUUM MOTOR R26APSS (HE) V.100/55 W.750
43	051360080	VACUUM MOTOR R26APSS (HE) V.120/60 W.750
43	051370081	VACUUM MOTOR R26APSS (HE) V.240/50 W.750
44	005100308	MOTOR GASKET
45	086630381	BRUSH HOLDER GASKET WITH MOTOR BUSH
47	182730081	PINION + NUT
48	013090300	TIMING BELT 249 M7
49	012480307	O'RING
51	083010000	LENS SET RED/GREEN
52	022740028	CORD 2 WIRES
52	022660028	CORD 3 WIRES
53	030640000	HEPA FILTER (STANDARD)
54	004440036	BUSH
55	013860029	RIGHT SUPPORT DYNAMIC
55	088800081	RIGHT SUPPORT DYNAMIC WITH MICROSWITCH
56	004370304	LEFT SUPPORT
57	020120000	RFI FILTER V.230
58	087064681	BASE HOUSING COVER DYNAMIC 12" WITH LENS
58	087074681	BASE HOUSING COVER DYNAMIC 15" WITH LENS
58	087084681	BASE HOUSING COVER DYNAMIC 18" WITH LENS
59	004410201	CONVOYER TUBE
60	086950009	SCREW 2,2x16 (WRAPPING OF 20 PCS)
61	013050316	FILTER
62	060290081	PULLEY
63	010580016	MOTOR FILTER
64	009650301	BRUSH ROLLER DYNAMIC 300 (12") BRISTLE 0,25 BLACK + INSERT
64	009660301	BRUSH ROLLER DYNAMIC 300(12") BRISTLE 0,30 RED + INSERT
64	009670301	BRUSH ROLLER DYNAMIC 380 (15") BRISTLE 0,25 BLACK + INSERT
64	009680301	BRUSH ROLLER DYNAMIC 380(15") BRISTLE 0,30 RED + INSERT
64	009690301	BRUSH ROLLER DYNAMIC 450 (18") BRISTLE 0,25 BLACK + INSERT
64	009700301	BRUSH ROLLER DYNAMIC 450 (18") BRISTLE 0,30 RED + INSERT
65	004341305	FOOT PEDAL RED
66	014800009	FOOT PEDAL SPRING
67	005391233	MOTOR HOUSING DARK GRAY
68	086881281	BASE HOUSING 12" DARK GRAY
68	086891281	BASE HOUSING 15" DARK GRAY
68	086901281	BASE HOUSING 18" DARK GRAY
69	086910081	REAR WHEEL ASSEMBLY
70	003753804	ADJUSTING KNOB BLUE
71	000990305	BRUSH ADJUSTER
72	005783804	SIDE COVER BLUE
73	085650081	ROLLER SUPPORT
74	011360307	O'RING
75	081940081	WHEELS SUPPORT
76	086071381	WRAPPING OF 20 PCS ROLLER COVER CLIP
77	003090004	FRONT WHEEL-NYLON SILVER GREY
78	013060029	FRONT AXLE
79	005571304	CHANNEL COVER
80	005460333	ROLLER COVER 30 (12")
80	005470333	ROLLER COVER 38 (15")
80	005480333	ROLLER COVER 45 (18")
81	004313812	BACK BUMPER 38 (15") BLUE
81	005733812	BACK BUMPER 45 (18") BLUE

82	004293812	FRONT BUMPER 30 (12") BLUE
82	004303812	FRONT BUMPER 38 (15") BLUE
82	005743812	FRONT BUMPER 45 (18") BLUE
84	085510000	RUBBER TUBE
85	004641201	EL.PANEL CAP
86	181480081	TRANSMISSION SUPPORT W/ PULLEY
87	085440081	COMPLETE GRILL
88	085231280	ELECTRIC PANEL CPL.V.100/55
88	085221280	ELECTRIC PANEL CPL.V.120/60 3 WIRES
88	085161281	ELECTRIC PANEL CPL.V.230/50 SCHUKO PLUG
88	085181281	ELECTRIC PANEL CPL.V.240/50 BRITISH PLUG
88	085431281	ELECTRIC PANEL CPL.V.240/50 SWISS PLUG
88	087941281	ELECTRIC PANEL CPL.V.230/50 AUSTRALIAN PLUG
88	085241280	ELECTRIC PANEL CPL.V.100/55 W/ELECTRONIC
88	085171281	ELECTRIC PANEL CPL.V.230/50 W/ELECTRONIC SCHUKO PLUG
88	085191281	ELECTRIC PANEL CPL.V.240/50 W/ELECTRONIC BRITISH PLUG
88	086771281	ELECTRIC PANEL CPL.V.230/50 W/ELECTRONIC SEV PLUG
89	085253881	HANDLE TUBE ASSEMBLY BLUE
90	085334601	BAG DOOR ASSEMBLY LIGHT GREY (ecoFORCE)
91	085530009	SCREW 2,9x19 (WRAPPING OF 20 PCS)
92	085540009	SCREW 3,5x9,5 TG (WRAPPING OF 20 PCS)
93	085550009	SCREW 3,5x25 (WRAPPING OF 20 PCS)
94	085560009	SCREW 3,9x16 (WRAPPING OF 20 PCS)
95	085640009	WRAPPING OF 20 PCS SCREW 4,8x13 TG
96	085570009	SCREW 3,5x32 (WRAPPING OF 20 PCS)
97	085580009	SCREW 3,9x19 (WRAPPING OF 20 PCS)
98	085590009	SCREW 3,9x13 (WRAPPING OF 20 PCS)
99	051050080	BRUSH MOTOR 100/120V 300-380 (12"-15")
99	051060080	BRUSH MOTOR 100/120V 450 (18")
99	051090081	BRUSH MOTOR 240V 300-380 (12"-15")
99	051100081	BRUSH MOTOR 240V 450 (18")
100	086290081	KIT MOTOR GASKET
101	085610009	SCREW 2,9x16 (WRAPPING OF 20 PCS)
102	005090000	BUSH MOTOR
103	022280000	THERMAL PROTECTOR CD2 V.120
103	022530000	THERMAL PROTECTOR V.240 ACTIVA ESO
103	022540000	THERMAL PROTECTOR V.100 ACTIVA ESO
104	012580315	CONVEJOR GASKET
105	005791304	CONVEJOR
106	005030004	SPACER CORD HOOK
107	085600009	SCREW 3,9x25 (WRAPPING OF 20 PCS)
108	088620081	DRIVE JOINT BASE
109	181490081	TRANSMISSION SUPPORT WITHOUT PULLEY
	022300000	CARBON BRUSH R36 (NEW)