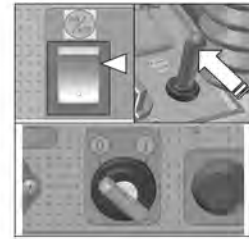
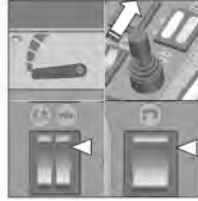


## On Completion of Work

Having finished the job and before any type of maintenance is done:

1. Close the tap
2. Raise the brush base
3. Switch off the brushes motor shift
4. Switch of the solenoid valve switch
5. Place the squeegee switch onto manual
6. Lift the squeegee
7. Switch of the suction motor switch
8. Bring the machine up to the place provided for the water outlet
9. Turn they key 1/4 round counter clockwise



1. Take off the exhaust pipe from its hook, unscrew the exhaust plug and empty the recovery tank. To simplify draining operation, it is recommended to hold the hose bent with one hand and with the other unscrew the knob and take off the plug. Slowly straighten the hose and the liquid will start draining at the desired speed. This operation has to be carried out using gloves to protect from contact with dangerous solutions .



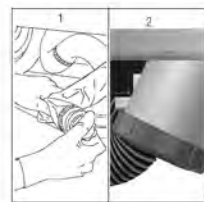
To preform this operation were the protection gloves to **prevent** contacts with dangerous solutions.

1. The squeegee has to be lifted when the machine is not operating. In this way damage to the squeegee rubbers is avoided.
2. Take off the brushes and clean them with a water jet.

## Daily Maintenance

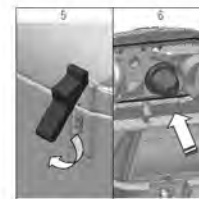
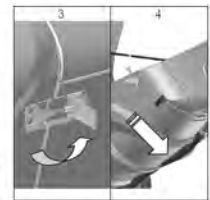
### Cleaning of the Recovery Tank

1. Empty the tank through the felible hose, unscrewing off some turns the knob and then taking off the plug.
2. Open the side plug by unscrewing the knob and rotating the closing blade.



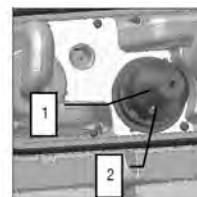
To preform this operation wear the protective gloves to prevent contacts with dangerous solutions.

3. Open the hooks for the tank fastening (3)
4. Pull carefully the tank in the rear side until the chain is tensioned.
5. Open the hooks that fasten the suction head (5)
6. Open the lid rotating it until it lead to the tank (6)
7. Rinse the tank and clean the exhaust plug
8. Retighten the side plug and the plug onto the exhaust pipe
9. To close the suction head and the tank, preform the reverse operations.



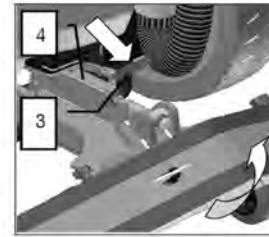
### Cleaning of Recovery Tank Filter

1. Open the recovery tank cover
2. Clean the tank with a water jet
3. Extract the filter of the float switch fixed inside the tank
4. Wash it thoroughly and put it again into its position



## Cleaning of the Squeegee

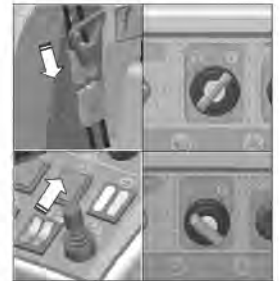
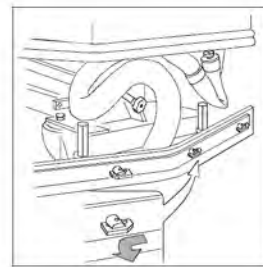
1. Lift up the squeegee assembly moving forward the manipulator (1)
2. Remove the suction hose from the squeegee connection (2)
3. Push the unhooking lever (3) and lift up the squeegee
4. Push the squeegee letting the support arm slide forward (4)
5. Rotate the squeegee until the arm (4) stops on the guide
6. The unhooking (3) lever lift up automatically after hooking of the brush ready to be pressed again.
7. Clean the squeegee using a jet of water. Verify the conditions of the rubbers and if necessary replace them. Taking care about the cleanliness of the squeegee assembly let the life of the suction motor be longer.
8. After the squeegee clean operations push the unhooking lever (3) and pull the squeegee in the rear side until it reach the initial position.



## Replacement of the Squeegee Rubber

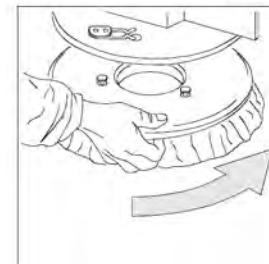
If the squeegee rubber is worn and does not dry well, it is possible to change the drying edge proceedings as follows:

1. Push and rotate the fixing plates
2. Slip off the rubber blade and the rubber itself
3. Turn the rubber up-side down and if necessary replace it
4. Adjust the squeegee height
5. Reassemble everything repeating inversely above operations.



## Disassembly of the Brushes

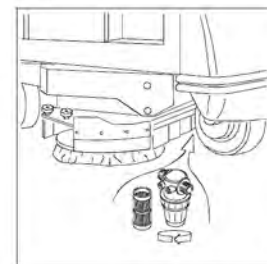
1. Connect the battery connector if it is not connected
2. Turn the key into position ON
3. with the manipulator lift the brushes base
4. Turn the key into position OFF and take it off from the instrument board (to carry out the operations of brush disassembly with connected current can cause damage to hands)
5. With the brushes base in lifted position, rotate the brush until it comes off from the brush plate seat as shown in the figure. The figure shows the rotating direction for the disassembly of the right brush, The left 1 has been rotated inversely.



## Solution Tank and Filter Cleaning

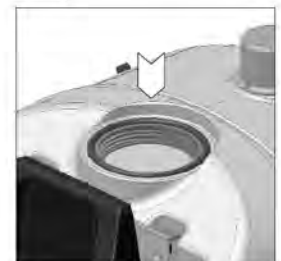
When the solution tank is empty:

1. Unscrew the filter and rinse the inside thoroughly
2. Take off the cartridge and clean it
3. Open the cock
4. Rinse the tank with a water jet
5. Reassemble everything again repeating inversely above operations



1. Unscrew the upper lid
2. Rinse out the tank using a jet of water
3. Remove the lid of the exhaust pipe and await until the tank is totally empty
4. Reinstall everything by performing operations in reverse way

**Note:** The filter can be cleaned also if the water tank is full. To close the tap is needed.

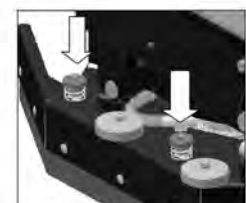


## Weekly Maintenance

### Adjust Splash Guards Brushes Base

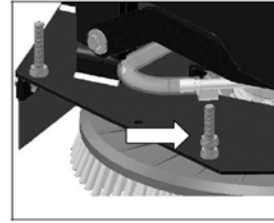
Periodically proceed with the height adjustment of the side covers of the brushes base. This operation has to be carried out with the brushes base down.

1. Loosen the fixing knobs of the covers
2. Slip off the covers from their seats



1. Tighten the upper nut with a key CH17 all that is necessary
2. Put the covers back into their position
3. Retighten the knobs

Keep in mind that the rubber must skim the floor and be parallel to it. This is being verified when the nuts have been tightened equally of both stud bolts.



## **Cleaning the Suction Hose**

Whenever suction seems to be unsatisfactory, check the suction hose is not obstructed. Eventually, clean it with a water jet introduced from the side where it is being connected to the tank.

Proceed as follows:

1. Unscrew the knob of the suction motor protection
2. Loosen the clamp which tightens the hose (2fig.4)
3. Clean with a water jet introduced from the side where it is being connected to the tank
4. Reassemble everything proceeding inversely with above operations